

ATTACHMENT B – Bobbin Lace reference



248 A doll 15 cm high, possibly a fashion doll, c. 1585. Livrustkammaren, Stockholm

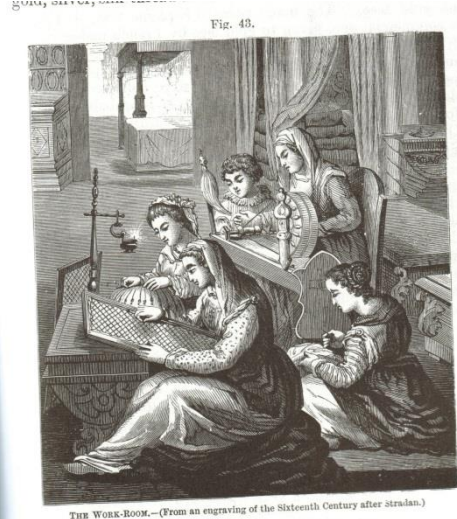
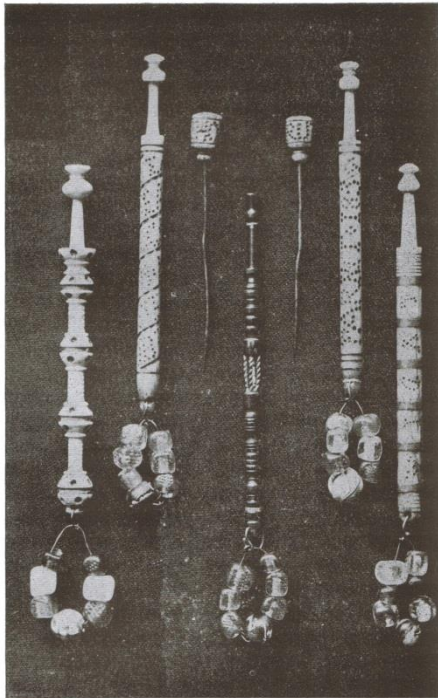


Fig. 48.

THE WORK-ROOM.—(From an engraving of the Sixteenth Century after Stradan.)



BOBBINS AND PINS.

Belonging to Mrs. Taylor, Huntspill Court, Bridgwater.

BOBBINS: 1. Bobbin from Paulerspury, Northants. 2. With cryptic inscription: TH: TL: 18: FW: YB: KI: SAG: WL: DEANS: YEAR. From Paulerspury, Northants. 3. Brass "Window" Bobbin. 4. Frances Parrit, 1834. From Bedfordshire. 5. Lydia. The bands are of pewter. PINS (from Bedfordshire): Inscribed respectively Thomas and Ruth.

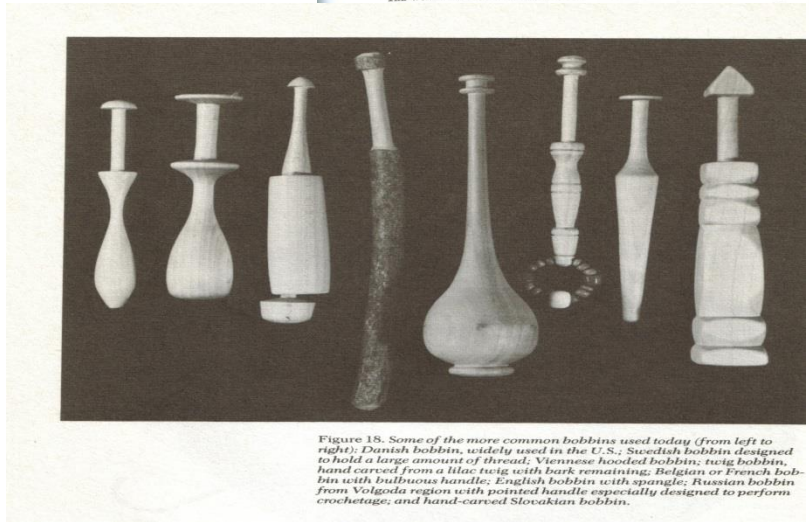
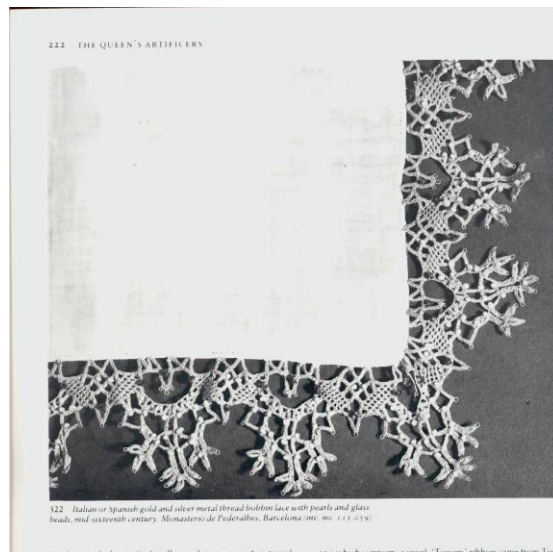


Figure 18. Some of the more common bobbins used today (from left to right): Danish bobbin, widely used in the U.S.; Swedish bobbin designed to hold a large amount of thread; Viennese hooded bobbin; twig bobbin, hand-carved from a lilac twig with bark remaining; Belgian or French bobbin with bulbous handle; English bobbin with spangle; Russian bobbin from Volgodla region with pointed handle especially designed to perform crochetage; and hand-carved Slovakian bobbin.



322 Italian or Spanish gold and silver metal thread bobbin lace with pearls and glass beads, mid-sixteenth century. Monastero de Fedralbes, Barcelona (ms. no. 111.059)

to the middle of it. Small metal ones were functional. 323 which supports a jewel. "Towers" ribbon came from Tours